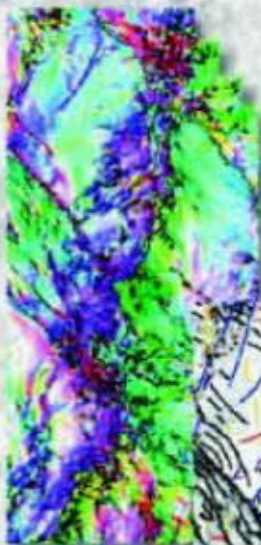


coh/TEEC®

Coherency Processing & Interpretation



Features

- ✓ Numerous processing operators
- ✓ Local dip and azimuth calculation
- ✓ Simultaneous multi-attribute display
- ✓ Fault attribute generator
- ✓ Interpretation module

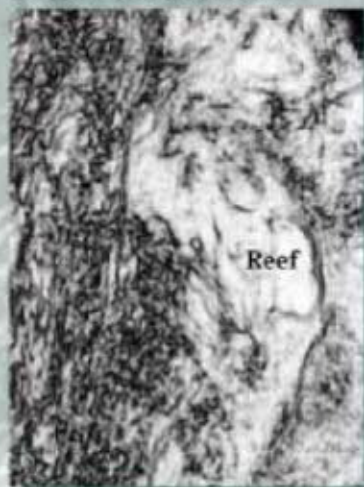
TEEC ware®

Finest Software for
Seismic Reservoir Characterisation

CohTEEC is an ensemble of software and workflows which allows the mapping of lithology, fluid contacts and fractures. Multi-trace filters detect and map faults and fracture zones whereas subtle changes in seismic attributes are used to detect oil-gas-water contacts. The package uses pattern recognition and feature extraction algorithms to generate seismic volume attributes and process large 3D seismic surveys. The size of the segments and the number of traces can be varied depending on the studied problem.

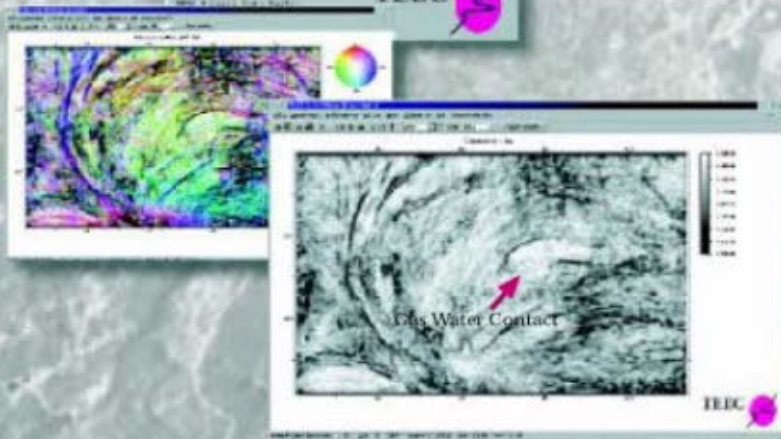
CohTEEC attributes have been used to identify features that are hard to detect or time consuming to interpret. In numerous cases these features have been linked to the reservoir heterogeneity. It has been shown that this information is essential for a better understanding of the seismic information when analysing reservoir performance.

Reef detection by CohTEEC



Start with TECLAUNCHER

- ✓ Geometry setting
- ✓ Horizon importing
- ✓ Time slice extraction
- ✓ Processing library
- ✓ Viewing & interpretation



Mapping GWC by CohTEEC



coh/TEEC[®]

Coherency Processing & Interpretation

CohTEEC in Summary

- ✓ SEGY & ASCII input & output
- ✓ Seismic data preparation & horizon loading
- ✓ Suitable for multi-processor architecture
- ✓ Coherency processing
- ✓ Choice of numerous operators
- ✓ Local dip & azimuth calculation
- ✓ Multi-attribute displaying & viewing
- ✓ Preparation of animations
- ✓ Unique interpretation module
- ✓ Detection & mapping of subtle faults or fractures
- ✓ Mapping of fluid contacts or lithology changes
- ✓ Digitizing & saving of geological features
- ✓ Fault attribute generator
- ✓ Preparing maps of fault density, connectivity or combinations
- ✓ Operating systems: Solaris, IRIX and LINUX

Burgwedeler Strasse 89
D-30916 Isernhagen, Germany
Phone: # 49 (0) 511 72 40 452
Fax: # 49 (0) 511 72 40 465
E-Mail: support@teec.de
Internet: www.teecware.com

TEEC

ware[®]

Finest Software for
Seismic Reservoir Characterisation